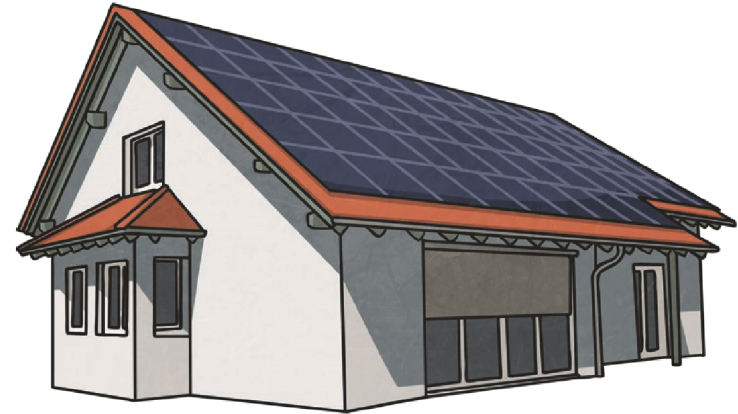


Renewable and Non-Renewable Challenge Cards



Renewable and Non-Renewable Challenge Cards

1. What is an advantage and disadvantage of solar energy?



Renewable and Non-Renewable Challenge Cards

2. Which of the following is not a non-renewable resource?

- a. coal
- b. oil
- c. biomass
- d. natural gas



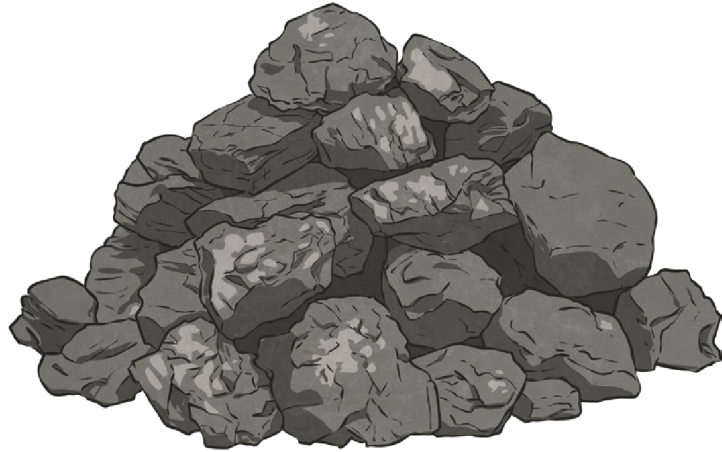
Renewable and Non-Renewable Challenge Cards

3. What type of renewable resource is made from the heat under Earth's surface?



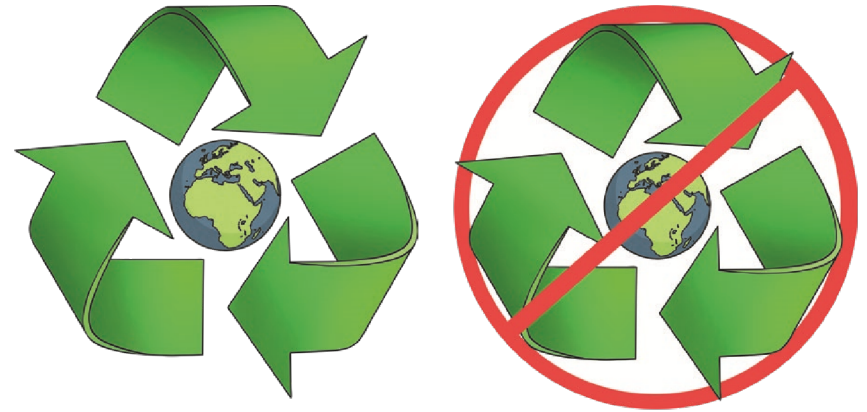
Renewable and Non-Renewable Challenge Cards

4. Is coal a renewable or non-renewable resource?



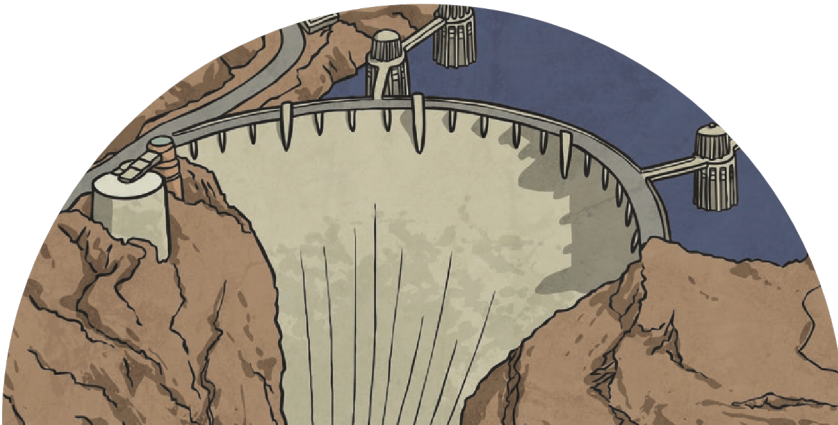
Renewable and Non-Renewable Challenge Cards

5. What is the difference between renewable and non-renewable energy?



Renewable and Non-Renewable Challenge Cards

6. What kind of renewable energy is made from fast-moving water spinning a turbine in a dam?



Renewable and Non-Renewable Challenge Cards

7. Which of the following is not a renewable resource?

- a. solar
- b. natural gas
- c. hydroelectric
- d. geothermal



Renewable and Non-Renewable Challenge Cards

8. What do you call an area with many wind turbines?



Renewable and Non-Renewable Challenge Cards

9. Which fossil fuel is used to heat homes and water, and to cook food?



Renewable and Non-Renewable Challenge Cards

10. What are the three fossil fuels?



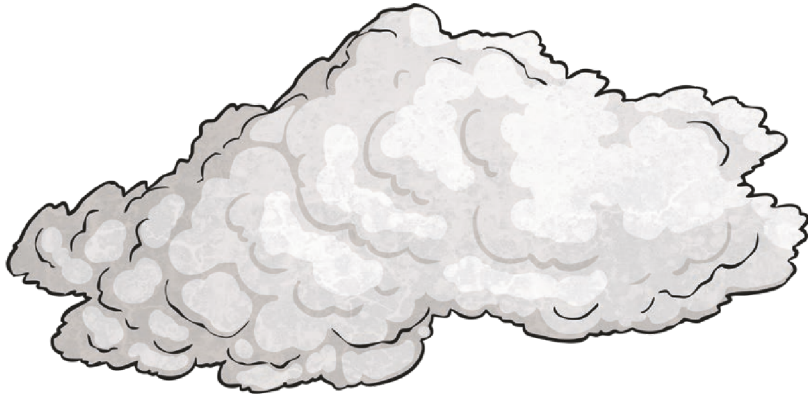
Renewable and Non-Renewable Challenge Cards

11. What is an advantage and disadvantage of biofuels?



Renewable and Non-Renewable Challenge Cards

12. Which type of renewable energy would you not want to use in an area that is often covered in clouds?



Renewable and Non-Renewable Challenge Cards

1. Answer will vary but could include: An advantage of solar energy is that it is renewable; A disadvantage of solar energy is that it requires a large amount of sunlight to be viable.
2. biomass
3. geothermal
4. non-renewable
5. Renewable energy is a type of energy from a source that is not depleted when used, such as wind or solar power. Non-renewable is a type of energy from a source that is depleted when used, such as oil, natural gas, or coal.

Renewable and Non-Renewable Challenge Cards

6. hydroelectric
7. natural gas
8. wind farm
9. natural gas
10. natural gas, oil, and coal
11. Answer will vary but could include: An advantage of biofuel is that it uses waste which would otherwise go to landfill or similar; A disadvantage of biofuel is that it can take a lot of space and money to set up and can create an unpleasant odor for local residents.
12. solar